



INSTALLATION INSTRUCTIONS

Thank you for choosing a Bella Lujo product.

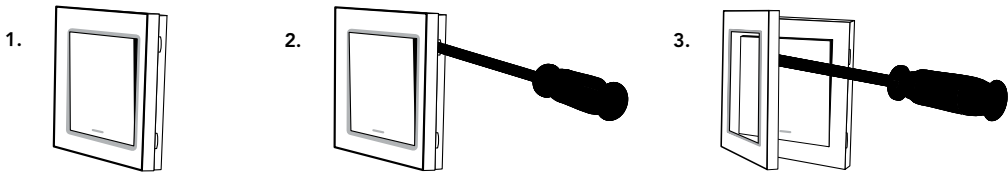
PLEASE NOTE all electrical work of this product **MUST** be performed by a Licensed Electrician.

WARNING!!! Always ensure that the **MAIN POWER SUPPLY IS TURNED OFF** before commencing any work.

Please read instructions carefully before attempting any installation.

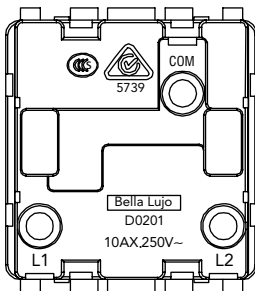
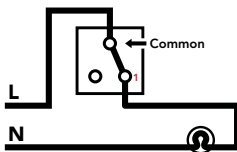
Removing Switch Fascia & Mounting Switch to Wall

1. Find the screwdriver slots positioned on both sides of the product
2. Use a flat blade object to insert into the slot and lift up (this maybe a bit firm)
3. Remove the front fascia
4. Position and align the switch with surrounding steel plate aligned to the wall mounting bracket (please ensure you have correct mounting wall bracket for the switch size) and mount switch to wall



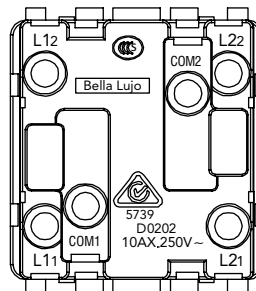
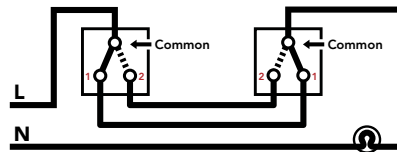
Wiring Diagrams (for Light Switches, Power Points, Fan Controllers and Dimmers)

1 Way Switching



Example
view of
product
back

2 Way Switching



Example
view of
product
back

Refitting the Fascia

Once the switch is screwed into position. Align the front fascia to the top 2 inserts on the switch and click the fascia into the slots. You should hear a clicking sound and the fascia will also feel firmly locked in.